

## PowerXplorer PX5



PowerXplorer 가

8-

가

, RMS

&

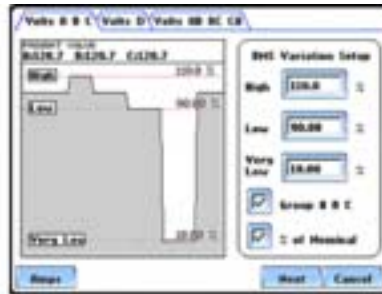
- 8 – , 4 voltage & 4 current
- 
- 가 , 2 kg /w
- AC/DC
- , 256 samples/cycle
- voltage & current ,
- (1 microsecond/channel)
- - (Dranetz 658-like and BMI-8800 like)
- RMS &
- THD/harmonic & TID/interharmonics 63rd
- Captures IEEE 1459 parameters for non-sinusoidal and advanced power systems
- RS-232, Ethernet or USB
- Battery or AC
- UPS battery w/
- 32, 64, 128 MB
- /English, Spanish, French, German, Italian, Swedish
- DRAN-VIEW PC Software (Windows NT, 98, ME, 2000, XP)
- Flicker according to IEC 61000-4-15
- with IEEE 1159, IEC 61000-4-30 Class A and EN50160
- in 400 Hz measurement version

&

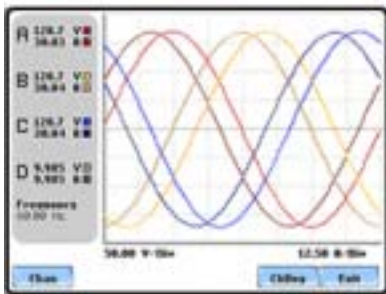
PowerXplorer 가 가 .  
Phasors, Waveforms, Meters and Harmonic spectrums,  
AC and DC from a microsecond to an hour.



Phasor Diagrams



Standard Setup Screen



Scope Mode



Event Characterization

**PC Software DRAN-VIEW**

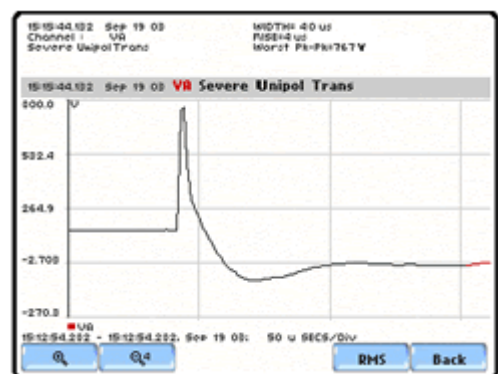
Wave Form Event & 3D  
Phasor & Wave Fault

Harmonics Analysis  
Report Writer

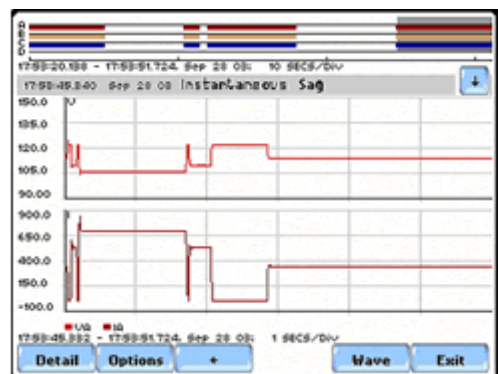
## PowerXplorer PX5

- \* Standard Power Quality, Demand, Energy, Harmonics.
- \* Current Inrush
- \* Fault Recorder
- \* Long-term Timed Recording, Demand, Energy, Harmonics
- \* Continuous Data Logging, Demand, Energy, Harmonics
- \* EN50160 Power Quality

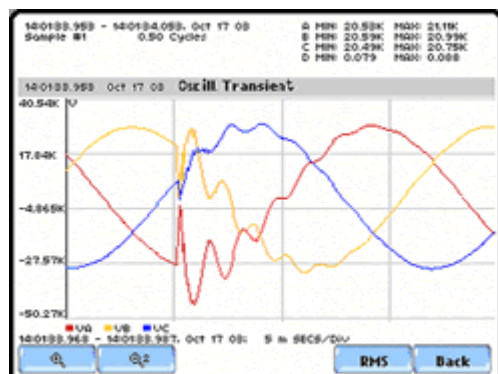
**Fast Transient Capture** PowerXplorer  
 microsecond-transients  
 (Dranetz 658-like and BMI 8800-like).  
 PowerXplorer  
 , transient  
 millisecond



**Power Quality Surveys and Diagnostics** PowerXplorer

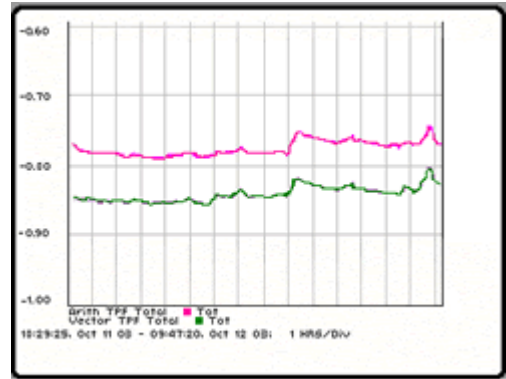


**Capacitor Switching Events** PowerXplorer  
 transients  
 transients  
 PowerXplorer  
 transients



Load Distortion and Imbalance PowerXplorer IEEE 1459

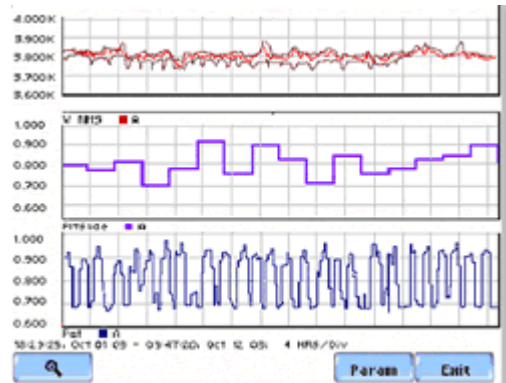
가



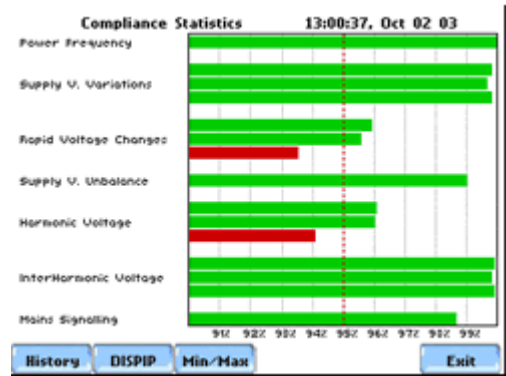
Flicker PowerXplorer IEC 6100-4-15

Flicker data

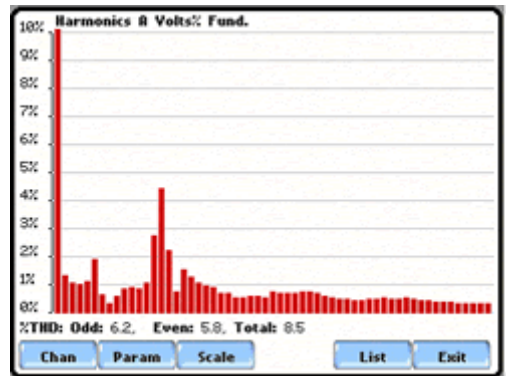
Dran-View software



Compliance Monitoring PowerXplorer IEEE 1159, IEC 61000-4-30 Class A and EN50160 가



Harmonics PowerXplorer harmonics, interharmonics and subharmonics



# PowerXplorer PX5 Specifications

## Specifications

### **Measured Parameters**

- (4) differential inputs, 1-600 Vrms, AC/DC,
- 0.1% rdg, 256 samples/cycle, 16 bit ADC
- (4) inputs with CTs 01-6000 Arms CT-dependent,
- AC/DC, 0.1%rdg + CTs, 256 samples/cycle, 16 bit ADC
- 1 MHz High Speed Sampling, 14 bit ADC, 1%FS
- Frequency Range, 10m Hz resolution, 45-65 Hz or 380-420 Hz
- Phase Lock Loop - Generator tracking
- Phase Lock Loop - Standard PQ mode

### **Power Quality Triggers**

- Cycle-by-cycle analysis
- 256 samples/cycle; 1/2 cycle RMS steps (1)
- L-L, L-N, N-G RMS Variations: Sags/swells/interruptions)
- RMS Recordings V&I (32 pre-fault, 10K post-fault cycles)
- Waveshape Recordings (2/6/2 cycles)
- Low and Medium Frequent Transients - V&I
- High Frequency Transients - V&I, 3% FS trigger (1)
- Harmonics Summary Parameters
- Cross trigger V & I channels
- RMS Event Characterization (IEEE or IEC)
- Transient Event Characterization (1)

### **Distortion/Power/Energy**

- W, VA, VAR, TPF, DPF, Demand, Energy, etc.
- IEEE 1459 Parameters of distorted and unbalanced
- Harmonics/Interharmonics per IEC 1000-4-7
- THD/Harmonic Spectrum (V,I,W) to 63rd
- TID /Interharmonic Spectrum (V,I) to 63rd
- Flicker per IEC 1000-4-15 (Pst,Plt,Sliding Plt)
- Crest Factor, K Factor, Transformer Derating Factor, Telephone Interference Factor
- Unbalance (max. rms deviation) & sequencing components
- 5 User Spec Harmonics or Signaling Frequency
- Vector/Arithmetic/Coincident Parameters

### Monitoring/Compliance

- IEEE 1159
- IEC 61000-4-30 Class A
- EN50160 Quality of Supply
- Current Inrush / Energization
- Voltage Fault recording
- Long Term Monitoring
  
- Continuous Data Logging w/min/max/avg

### General Specifications

- Size (HxWxD): 12" x 2.5" x 8" (30cm x 6.4cm x 20.3 cm)
- Weight: 4.2 pounds (1.9 kg)
- Operating Temperature: 0 -50 (32 to 122 )
- Storage Temperature: -20 to 55 (4 to 131 F)
- Humidity: 10 to 90% non-condensing
- System Time Clock-Crystal controlled-1 second resolution
- Charger /Battery Eliminator: 90-264 VAC 47-63 Hz
  
- Display: LCD color touch screen
- Memory options (must have one): 32M-128M removable compact flashcard

## Accessories

---

### TR-2510A

CT  
0A-10A RMS Current probe,  
Max conductor size 0.47"



### Flex Probes

Select 30/300/3000A RMS, or  
60/600/6000A RMS  
Requires adapter cable CA4300LEM



### SCC 4300



# PowerXplorer PX5 Accessories

## Options & Accessories

### Flash Card

#### Memory

Sizes : 32Mb, 64Mb, 128Mb

### SCC 4300



### LPC 4300

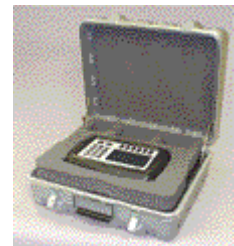
(NEMA 4x)

AC

(CTIC-LPC Cable, for current, is optional)



### RSC 4300



### TR-2500

Current probe,  
10A-500A RMS 48Hz-3kHz (not for transient capture)  
Max conductor size 1.8" or 2.5"x0.2"



### TR-2510

Current probe,  
0A-10A RMS  
Max conductor size 0.47"



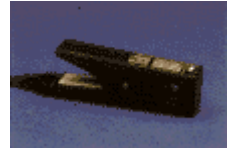
### TR-2520

Current probe,  
300A - 3000A RMS  
Max conductor size 2.56" or 1.97"x5.3"





**TR-2021** Current probe,  
1A-30A RMS, 48Hz-10kHz, Max conductor size 0.47"  
Requires cable adaptor CA4300



**TR-2019B** Current probe,  
1A-300A RMS 45Hz-50kHz; Max conductor size 2.0"  
Requires cable adaptor CA4300



**TR-2022** Current probe,  
10A - 1000A RMS 45Hz-10kHz; Max conductor size 2.0"  
Requires cable adaptor CA4300



**TR-2023** Current probe, 100A - 3000A RMS 45Hz-5kHz;  
Max conductor size 2.56" or 1.97"x5.3"  
Requires cable adaptor CA4300

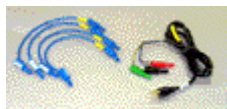


#### **Flex Probes**

Select 30/300/3000A RMS, 60/600/6000A RMS  
Requires adapter cable CA4300LEM



**VCP4300** (4) .  
120VAC single phase outlet



**COM-RS232** PC  
RS232 serial interface



**COM-OUA** USB-FiberOptic Adapter

**COM-OEA** LAN-FiberOptic Adapter

---